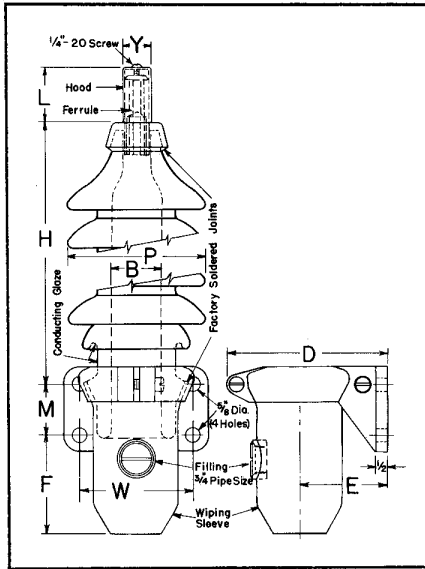
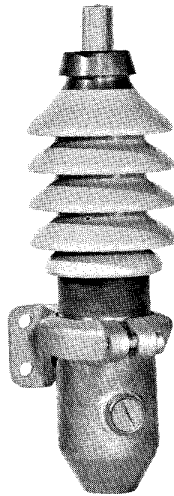


I/C Bracket Mounted



Catalog numbers are for copper, single conductor cable and include porcelain, wiping sleeve entrance fitting and internal solder style connector. Required stress cone kits, insulating compound and aerial lugs are ordered separately. Optional connector styles, stuffing box (RS) entrance fittings are available.

Aluminum conductor cables require compression style connectors.

Note: For aluminum cable over 250 kcmil, use the next larger size termination for correct internal clearances.

Bracket* Size Code	Dimensions—in. (mm)				Approx. Shp'g. Wt. lbs (kg)
	D	E	M	W	
E	6-3/8 (162)	3-1/2 (89)	2 (51)	4-1/2 (114)	4 (1.8)
F	7-1/4 (184)	3-7/8 (98)	2 (51)	4-1/2 (114)	5 (2.3)
G	7-7/8 (200)	4-1/4 (108)	3 (76)	5-1/2 (140)	7 (3.2)
H	9-1/2 (241)	5 (127)	3 (76)	6 (152)	10 (4.5)

*Code letter appears as last digit in termination part number.

Cast aluminum alloy brackets are standard. For bronze brackets add suffix "J" to part number.

Style 'ST'— For Compound, Oil or Gas Filling*

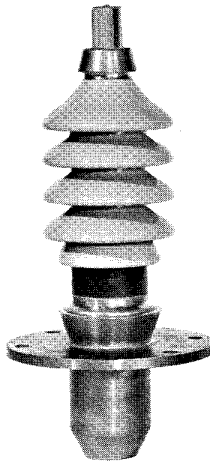
Max. Cond'r. Size		Catalog No.	Dimensions—Inches (mm)						Approx. Shp'g. Wt. Lb (Kg)	Approx. Comp'd. Req'd. Gal (L)
KCM	mm ²		Bore "B"	O.D. "P"	F	H	L	Y		
15kV (110kV BIL)										
250	127	ST172E	2 (51)	5-1/2 (140)	3-13/16 (97)	11 (279)	1-3/4 (44)	7/8 (22)	22 (10)	1/4 (1)
350	177	ST175E	2 (51)	5-1/2 (140)	3-13/16 (97)	11 (279)	2-3/16 (56)	1-1/8 (29)	25 (11)	1/4 (1)
500	253	ST175F	2-1/2 (64)	6 (152)	4-5/16 (110)	11-5/16 (287)	2-3/16 (56)	1-1/8 (29)	28 (13)	1/3 (1.2)
1000	506	ST177F	2-1/2 (64)	6 (152)	4-5/16 (110)	11-5/16 (287)	2-9/16 (65)	1-1/2 (38)	34 (15)	1/3 (1.2)
2000	1013	ST179G	3 (76)	6-1/2 (165)	3-9/16 (90)	11-5/16 (287)	2-11/16 (58)	2-1/8 (54)	48 (22)	1/2 (1.9)
2500	1267	ST170H	3-3/4 (95)	7-5/8 (194)	5-1/2 (140)	11-1/2 (292)	3-7/8 (98)	2-3/4 (70)	74 (34)	3/4 (2.8)
25kV (150kV BIL)										
250	127	†ST182E	2 (51)	5-1/2 (140)	3-7/8 (98)	13-15/16 (354)	1-3/4 (44)	7/8 (22)	26 (12)	1/3 (1.2)
350	177	†ST185E	2 (51)	5-1/2 (140)	3-3/4 (95)	14-1/16 (357)	2-3/16 (56)	1-1/8 (29)	29 (13)	1/3 (1.2)
500	253	ST185F	2-1/2 (64)	6 (152)	4-1/4 (108)	14-3/8 (365)	2-3/16 (56)	1-1/8 (29)	35 (16)	1/2 (1.9)
1000	506	ST187G	3 (76)	6-1/2 (165)	3-15/16 (100)	14-3/8 (365)	2-9/16 (65)	1-1/2 (38)	50 (23)	2/3 (2.5)
1500	760	ST189G	3 (76)	6-1/2 (165)	3-5/8 (92)	14-3/8 (365)	2-11/16 (68)	2-1/8 (54)	59 (27)	2/3 (2.5)
2000	1013	ST189H	3-3/4 (95)	7-5/8 (194)	6-1/8 (156)	14-1/8 (359)	2-11/16 (68)	2-1/8 (54)	64 (29)	1 (3.8)
2500	1267	ST190H	3-3/4 (95)	7-5/8 (194)	5-9/16 (141)	14-1/16 (357)	3-7/8 (98)	2-3/4 (70)	80 (36)	1 (3.8)
34.5kV (200kV BIL)										
500	253	ST195G	3 (76)	6-1/2 (165)	4 (102)	17-3/8 (441)	2-3/16 (56)	1-1/8 (29)	46 (21)	3/4 (2.8)
750	380	ST197G	3 (76)	6-1/2 (165)	4 (102)	17-3/8 (441)	2-9/16 (65)	1-1/2 (38)	52 (24)	3/4 (2.8)
1000	506	ST197H	3-3/4 (95)	7-5/8 (194)	6-1/4 (159)	17-1/8 (435)	2-9/16 (65)	1-1/2 (38)	62 (28)	1-1/4 (4.7)
2000	1013	ST199H	3-3/4 (95)	7-5/8 (194)	6-1/8 (156)	17-1/8 (435)	2-11/16 (68)	2-1/8 (54)	72 (33)	1-1/4 (4.7)
2500	1267	ST190J	4-1/2 (114)	8-3/8 (213)	Horizontal Brackets, Drawings on Request			2-1/8 (54)	125 (57)	2 (7.6)
46kV (250kV BIL)										
500	253	ST105H	3-1/2 (89)	7-3/8 (187)	6-3/16 (157)	22-9/16 (573)	2-3/16 (56)	1-1/8 (29)	66 (30)	2 (7.6)
1000	506	ST107H	3-1/2 (89)	7-3/8 (187)	6-3/16 (157)	22-9/16 (573)	2-9/16 (65)	1-1/2 (38)	72 (33)	2 (7.6)
1000	506	ST107J	4-1/2 (114)	8-3/8 (213)	Horizontal Brackets, Drawings on Request				120 (54)	2-1/2 (9.5)
2000	1013	ST109J	4-1/2 (114)	8-3/8 (213)	Horizontal Brackets, Drawings on Request				135 (61)	2-1/2 (9.5)
69kV (350kV BIL)										
1000	506	▲CT117K	5 (127)	9-7/8 (251)	Horizontal Brackets, Drawings on Request				330 (150)	3-1/2 (13)

†Ordinarily for over insulated 15kV outdoor operation. Next larger bore porcelain (ST185F) recommended for 23kV actual operation for 500 kcm and below.

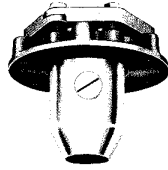
*For gas filled terminations, use 46kV rating for 34.5kV and 69kV for 46kV operation.

▲Includes porcelain internal stress control tube, and gasketed, spun on head and body.

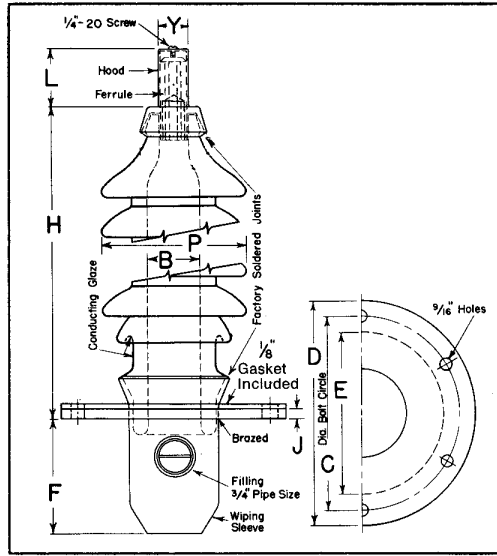
1/2 Flange Mounted



STR



RST



Catalog numbers are for copper, single conductor cable and include porcelain, wiping sleeve entrance fitting and internal solder style connector. Required stress cone kits, insulating compound and aerial lugs are ordered separately. Optional connector styles, stuffing box (RS) entrance fittings are available. The terminations are applicable in oil and air insulated compartments.

Aluminum conductor cables require compression style connectors.

Note: For aluminum cable over 250 kcmil, use the next larger size termination for correct internal clearances.

Flange Size Code*	Dimensions—Inches (mm)			No. of Holes
	C	D	E	
E (SNTR)	4-1/8 sq. (105)	5-3/8 sq. (137)	4-1/2 (114)	4†
E	7-1/4 (184)	8-1/2 (216)	6 (152)	6†
F	8-3/4 (222)	10 (254)	7-1/2 (191)	8‡
G	8-3/4 (222)	10 (254)	7-1/2 (191)	8‡
H	10 (254)	11 (279)	8-3/8 (213)	8‡

*Code letter appears as last digit in termination catalog number.

†Flange thickness "J"=3/8" (9.5 mm)

‡Flange thickness "J"=1/2" (12.7 mm)

Style "STR"—For Compound, Oil or Gas Filling*

Max. Cond'r. Size		Catalog No.**	Dimensions—Inches (mm)							Approx. Shp'g. Wt. Lb (Kg)	Approx. Comp'd. Req'd. Gal (L)
KCM	mm ²		Bore "B"	O.D. "P"	F	H	L	Y			
15kV (110kV BIL)											
250	127	STR172E	2 (51)	5-1/2 (140)	4-1/4 (108)	12-9/16 (319)	1-3/4 (44)	7/8 (22)	26 (12)	1/4 (1)	
350	177	STR175E	2 (51)	5-1/2 (140)	4-1/4 (108)	12-9/16 (319)	2-3/16 (56)	1-1/8 (29)	29 (13)	1/4 (1)	
500	253	STR175F	2-1/2 (64)	6 (152)	4-7/8 (124)	12-13/16 (325)	2-3/16 (56)	1-1/8 (29)	33 (15)	1/3 (1.2)	
1000	506	STR177F	2-1/2 (64)	6 (152)	4-7/8 (124)	12-13/16 (325)	2-9/16 (65)	1-1/2 (38)	39 (18)	1/3 (1.2)	
2000	1013	STR179G	3 (76)	6-1/2 (165)	4-13/16 (122)	13-1/16 (332)	2-11/16 (68)	2-1/8 (54)	55 (25)	1/2 (1.9)	
2500	1267	STR170H	3-3/4 (95)	7-5/8 (194)	6-7/16 (175)	13-5/8 (346)	3-7/8 (98)	2-3/4 (70)	84 (38)	3/4 (2.8)	
Alternate: 15kV, corrugated porcelain. Square flange.											
250	127	SNTR172E	2 (51)	4-1/4 (108)	4-1/2 (114)	12-1/2 (318)	1-3/4 (44)	7/8 (22)	26 (12)	1/4 (1)	
350	177	SNTR175E	2 (51)	4-1/4 (108)	4-1/2 (114)	12-1/2 (318)	2-3/16 (56)	1-1/8 (29)	29 (13)	1/4 (1)	
25kV (150kV BIL)											
250	127	STR182E	2 (51)	5-1/2 (140)	4-1/4 (108)	15-9/16 (395)	1-3/4 (44)	7/8 (22)	30 (14)	1/3 (1.2)	
500	253	STR185F	2-1/2 (64)	6 (152)	4-7/8 (124)	15-3/4 (400)	2-3/16 (56)	1-1/8 (29)	40 (18)	1/2 (1.9)	
1000	506	STR187G	3 (76)	6-1/2 (165)	5-3/16 (132)	16-1/8 (410)	2-9/16 (65)	1-1/2 (38)	57 (26)	2/3 (2.5)	
1500	760	STR189G	3 (76)	6-1/2 (165)	4-7/8 (124)	16-1/8 (410)	2-11/16 (68)	2-1/8 (54)	66 (30)	2/3 (2.5)	
2000	1013	STR189H	3-3/4 (95)	7-5/8 (194)	7 (178)	16-1/4 (413)	2-11/16 (68)	2-1/8 (54)	74 (34)	1 (3.8)	
2500	1267	STR180H	3-3/4 (95)	7-5/8 (194)	6-3/8 (162)	16-1/4 (413)	3-7/8 (98)	2-3/4 (70)	90 (41)	1 (3.8)	
34.5kV (200kV BIL)											
500	253	STR195G	3 (76)	6-1/2 (165)	5-3/16 (132)	19-1/8 (486)	2-3/16 (56)	1-1/8 (29)	53 (24)	3/4 (2.8)	
750	380	STR197G	3 (76)	6-1/2 (165)	5-3/16 (132)	19-1/8 (486)	2-9/16 (65)	1-1/2 (38)	59 (27)	3/4 (2.8)	
1000	506	STR197H	3-3/4 (95)	7-5/8 (194)	7-1/8 (181)	19-1/4 (489)	2-9/16 (65)	1-1/2 (38)	72 (33)	1-1/4 (4.7)	
2000	1013	STR199H	3-3/4 (95)	7-5/8 (194)	7 (178)	19-1/4 (489)	2-11/16 (68)	2-1/8 (54)	82 (37)	1-1/4 (4.7)	
2500	1267	STR190J	4-1/2 (114)	8-3/8 (213)	7-9/16 (192)	19-5/16 (491)	3-7/8 (98)	2-3/4 (70)	125 (57)	2 (7.6)	
46kV (250kV BIL)											
500	253	STR105H	3-1/2 (89)	7-3/8 (187)	7-1/8 (181)	24-5/8 (625)	2-3/16 (56)	1-1/8 (29)	76 (35)	2 (7.6)	
1000	506	STR107H	3-1/2 (89)	7-3/8 (187)	7-1/8 (181)	24-5/8 (625)	2-9/16 (65)	1-1/2 (38)	82 (37)	2 (7.6)	
1000	506	STR107J	4-1/2 (114)	8-3/8 (213)	7-7/8 (200)	24-3/4 (629)	2-9/16 (65)	1-1/2 (38)	120 (54)	2-1/2 (9.5)	
2000	1013	STR109J	4-1/2 (114)	8-3/8 (213)	7-7/8 (200)	24-3/4 (629)	2-11/16 (68)	2-1/8 (54)	135 (61)	2-1/2 (9.5)	

*For gas filled terminations, use 46kV rating for 34.5kV and 69kV for 46kV operation.

**For clamp style 'RST' flange add prefix 'R' to catalog number.