



Engineered to Order
Built to Last



Dry Type Outdoor Terminations

145kV

G&W's Python™ premolded dry type outdoor terminations are available for 145kV IEC (138kV IEEE) extruded dielectric cable systems. Utilizing state-of-the-art mechanical shrink technology, the compact units offer maximum reliability with extreme ease of installation. G&W has been a leading supplier of innovative underground cable accessory solutions since it was founded in 1905. With installations and sales representation worldwide, G&W continues to offer the latest technology products with world-class, time-proven performance. G&W is ISO 9001:2000 registered for its quality systems. G&W offers a wide variety of terminations and joints for all types of cable construction through 500kV.

APPLICATION

G&W dry type outdoor terminations (Catalog number PAT130C) can be used on 240-630mm² (500-1250 kcmil) copper conductor extruded dielectric cable with insulation diameter 60mm-70mm and corrugated aluminum sheath. Tested to IEC 60840 and IEEE 48.

STANDARD COMPONENTS

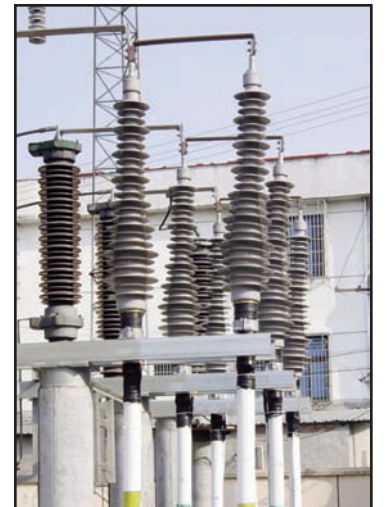
- 2 - hole aerial connection
- Hood nut
- Corona shield cap
- Premolded termination body with built in stress control
- Shield slip ring
- Ground provision
- Cable entrance housing with shield break and wiping sleeve
- Mounting bracket
- Heat shrink sealing tubes

FEATURES

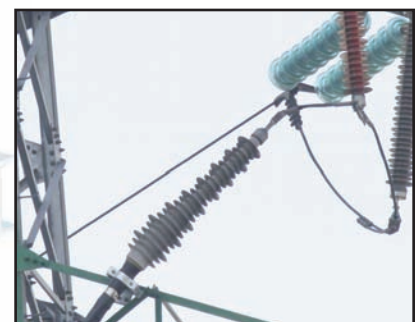
- Dry type premolded termination body
- Flexible design
- Vertical, horizontal or angled mounting positions
- Mechanical shrink installation



▲ Mechanical shrink installation



▲ Substation application



▲ Angle mounting on pole